

FRM220-CH02-SMT

FRM220-CH02-SMT Chassis



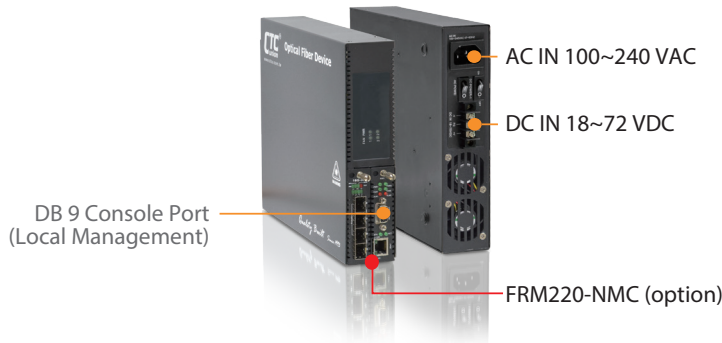
The FRM220-CH02/SMT is a two-slot chassis, which can be SNMP managed when installing one FRM220-NMC Network Management Controller card into the chassis for Web, Telnet, Console and SNMP management. In addition, the FRM220-CH02/SMT provides power and cooling fan failure alarm detection via NMC card. The available power supplies are built-in AC, DC, 2 AC, 2 DC or AC+DC dual power. All types of FRM220 series cards can be installed into FRM220-CH02/SMT two-slot chassis such as 10G, 2.7G 3R Transponder, 1E1/5E1/8E1 to Ethernet E1 Inverse Multiplexer, Ethernet over Fiber, E1/T1, 35/X21/R5530 fiber modem, POTS over fiber, and RS485/422/232 fiber converter.

Features

- Two-slot chassis for FRM220 line cards
- Support backplane connection between two slots
- Telnet, Web, Console, SNMP manageable via NMC card
- Supports one or two single width blades or one double width blade
- Supports built-in AC, DC, 2 AC, 2 DC, AC+DC power supplies
- Supports built-in heat sink cooling Fan
- **Supports power and cooling fan failure alarm detection**

Chassis Overview

- Power & Cooling Fan Failure Alarm Detection



Network Management Controller – FRM220-NMC

The FRM220-NMC is a Network Management Controller card that can be placed in a FRM220-CH02/SMT chassis to provide device management functions. The management interface supports a local RS-232 serial console or remote TCP/IP management by Telnet, HTTP and SNMP protocols. The card also supports online firmware upgrade from TFTP server, using any user interface, without affecting any other inserted line card's transmissions. Support for any standard NMS is provided by the included enterprise MIB file. CTC Union also provides and maintains our own EMS (Element Management System) which is a Java based client/server manager for monitoring and maintaining a large number of network elements over a long period of time.

NMC Web GUI

The local area screen (Figure 1) is also the home page for the Web management of the NMC. An overview of all installed network interface cards (NIC) is shown with real-time status of LEDs. To enter the configuration screen for a NIC, simply click on the card.

The Properties screen (Figure 2) gives a quick overview of the power and fan status in the chassis. This page display messages in the system log and can generate SNMP traps when a trap receiver is configured.

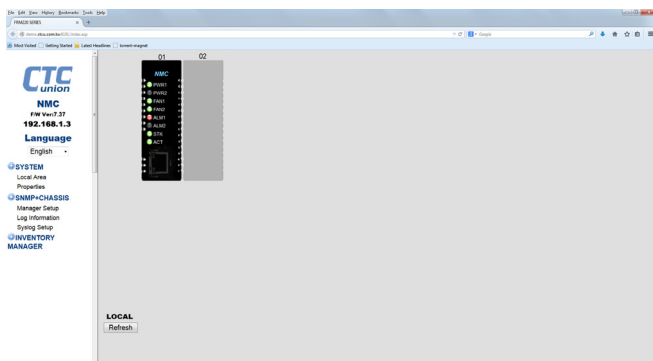


Figure 1

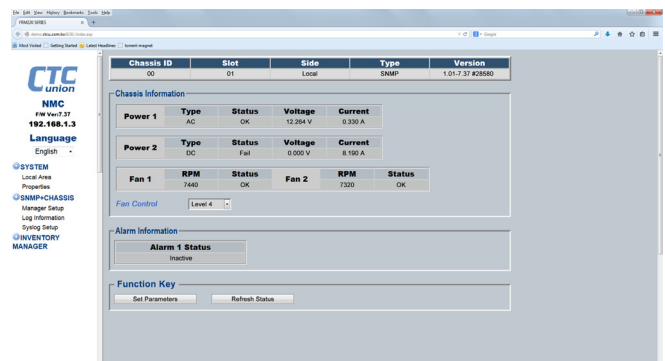
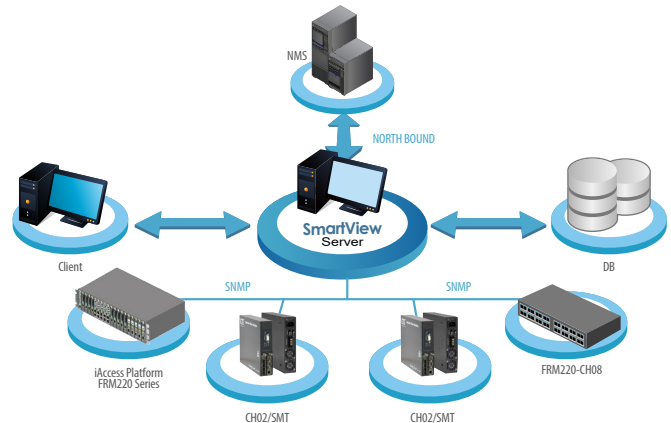


Figure 2

EMS

CTC Union's Management System is a comprehensive management solution that monitors device performance, enables remote configuration and provisioning, and provides fault notification status. The tools include SmartView™ Element Management System (EMS)

- Main Functions (FCAPS) : Fault, Configuration, Accounting, Performance and
- Security Management
- Remote access control for efficient configuration
- Traffic / Performance monitoring and management
- Alarm Trap and event log management
- Auto Discovery and Device Viewer
- Allow up to 25 administrators to login,
- Allow up to 2000 devices management



Network Scheme Diagram

Ordering Information

Model Name	Description
CH02/SMT-AC,DC,AD	2 Slots Chassis with optional NMC card and AC: 30W 100~240VAC, DC: 30W 18~72VDC or Dual power (AC+DC), Cooling Fan, with Power and Cooling Fan Failure Alarm Detection function

Optional Accessories

Rack Mounting Ear	Description
CH02-RME03	Single unit Rack Mounting EAR for CH02/SMT chassis

FRM220 - □□□□ - □□□□□

Example: FRM220 - CH02-RME03

