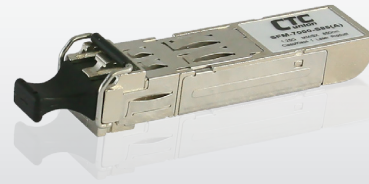


SFP Fiber Transceiver

Hot-Pluggable Fiber Transceiver Modules



SFP+ and QSFP+ Transceivers are high performance, multi-purpose modules for optical data communications applications specified for multi-mode or single mode at 10Gbps/40Gbps. They operate with +3.3V/5V power supplies and are intended for single mode or multi-mode fiber, operating at a nominal wavelength of 850nm, 1310nm and 1550nm or CWDM/DWDM wavelength. Each SFP+ Transceiver consists of a transmitter optical subassembly, a receiver optical subassembly and an electrical subassembly. SFP+ Transceivers are duplex LC transceiver designed for use in 10Gbps / 40Gbps short or long reach applications.

Features

- Compliant to SFF-8436 QSFP+ MSA (40G QSFP)
- Single 3.3V power supply
- Duplex or Simplex LC receptacle connector
- Built-in digital diagnostic function
- Single 3.3V power supply
- RoHS compliant
- Lower power dissipation
- Hot Pluggable

10Gbps SFP+

- Dual Fiber SFP+ / 10G Ethernet, SONET OC192, SDH STM-64

Model Name	Wavelength(nm)	Media	Optical Power(dBm)	Sensitivity(dBm)	Power Budget(dB)	Distance	DDMI
SFM-1000-SR85	850	MMF	-1 ~ -7.1	-9.9	2.8	300m	✓
SFS-1010-LR31	1310	SMF	+0.5 ~ -6	-14.4	8.4	10km	✓
SFS-1020-LR31	1310	SMF	+0.5 ~ -3	-15	12	20km	✓

- BiDi SFP+ / 10G Ethernet, SONET OC192, SDH STM-64

Model Name	Wavelength(nm)	Media	Optical Power(dBm)	Sensitivity(dBm)	Power Budget(dB)	Distance	DDMI
SFS-1010-WA	T1270/R1330	BiDi SMF	-4 ~ +1	-14	10	10km	✓
SFS-1010-WB	T1330/R1270	BiDi SMF	-4 ~ +1	-14	10	10km	✓
SFS-1020-WA	T1270/R1330	BiDi SMF	-2 ~ +2	-14	12	20km	✓
SFS-1020-WB	T1330/R1270	BiDi SMF	-2 ~ +2	-14	12	20km	✓

- CWDM Dual Fiber SFP+ 10G Ethernet, SONET OC192, SDH STM-64

Model Name	Wavelength(nm)	Media	Optical Power(dBm)	Sensitivity(dBm)	Power Budget(dB)	Distance	DDMI
SFS-1030-CXX-DD	1270 ~ 1450nm	SMF	+4 ~ -1	< -15	14	30km	✓

10Gbps XFP

- Dual Fiber XFP / 10G Ethernet, SONET OC192, SDH STM-64

Model Name	Wavelength(nm)	Media	Optical Power(dBm)	Sensitivity(dBm)	Power Budget(dB)	Distance	DDMI
XFM-1000-SR85	850	MMF	-1 ~ -7.1	< -9.9	2.8	300m	✓
XFS-1010-LR31	1310	SMF	-1 ~ -6	< -14.4	8.4	10km	✓
XFS-1020-LR31	1310	SMF	+0.5 ~ -3	< -15	12	20km	✓

- BiDi XFP / 10G Ethernet, SONET OC192, SDH STM-64

Model Name	Wavelength(nm)	Media	Optical Power(dBm)	Sensitivity(dBm)	Power Budget(dB)	Distance	DDMI
XFS-1010-WA	T1270/R1330	BiDi SMF	0 ~ -5	< -14	11	10km	✓
XFS-1010-WB	T1330/R1270	BiDi SMF	0 ~ -5	< -14	11	10km	✓
XFS-1020-WA	T1270/R1330	BiDi SMF	+3 ~ -2	< -14	12	20km	✓
XFS-1020-WB	T1330/R1270	BiDi SMF	+3 ~ -2	< -14	12	20km	✓

16Gbps SFP+

• Dual Fiber SFP+ / (LC Type) FC16/8/4G

Model Name	Wavelength(nm)	Media	FC	16GFC	Package	Distance	Temp.
SFM-3000-85	850nm VCSEL	MMF	16G/ 8G/4G	1600-SN	SFP+ with DMI	35/100/120m	0~ 70 °C
SFS-3010-31	1310nm DFB	SMF	16G/ 8G/4G	1600-SN	SFP+ with DMI	10km	0~ 70 °C

• CWDM Dual Fiber SFP+ / (LC Type) FC16/8/4G

Model Name	Wavelength(nm)	Media	FC	16GFC	Package	Distance	Temp.
SFS-3010-Cxx	1270~1330nm	SMF	16G/ 8G/4G	1600-SN	SFP+ with DMI	10km	0~ 70°C
SFS-3010-Cxx	1470~1610nm	SMF	16G/ 8G/4G	1600-SN	SFP+ with DMI	10km	0~ 70°C

40Gbps QSFP+

• QSFP+ MPO

Model Name	Wavelength(nm)	Media	Bit Rate	40G Base	Package	Distance	Temp.
QSFP-000-SR4	850nm VCSEL	MMF	40 Gb/S	SR4	QSFP+ with DMI	100m	0~ 70°C
QSFP-000-eSR4	850nm VCSEL	MMF	40 Gb/S	eSR4	QSFP+ with DMI	300m	0~ 70°C
QSFP-001-PSM-IR4	1310nm FP	SMF	40 Gb/S	PSM-IR4	QSFP+ with DMI	1.4km	0~ 70°C
QSFP-010-PSM-LR4	1310nm DFB	SMF	40 Gb/S	PSM-LR4	QSFP+ with DMI	10km	0~ 70°C
QSFP-002-LX4	1300-CWDM DFB	MMF	40 Gb/S	LX4	QSFP+ with DMI	MM 150m, SM 2km	0~ 70°C
QSFP-002-IR4	1300-CWDM DFB	SMF	40 Gb/S	IR4	QSFP+ with DMI	2km	0~ 70°C
QSFP-010-LR4	1300-CWDM DFB	SMF	40 Gb/S	LR4	QSFP+ with DMI	10km	0~ 70°C