



# FTH4-100M

## Web Smart FE OAM/IP Managed Converter with Cable Tray

The FTH4-100M is an IEEE802.3ah OAM compliant copper to fiber Fast Ethernet solution designed to make conversion between 10/100Base-TX and 100Base-FX fiber optics. The FTH4-100M has a built-in cable tray that allows the installer to enclose the excessive fiber within the converter. When deployed as a stand-alone solution, this media converter incorporates an easy to use Web user interface for operation, administration and maintenance, both locally and remotely. By offering IEEE802.3ah OAM compliance, this converter can be linked to any IEEE802.3ah compliant fiber switch and support loop back and dying gasp functions. All functions of this converter and the remotely connected converter can be configured and monitored via Web management, including bandwidth control, duplex, speed and VLAN configuration.

### Features

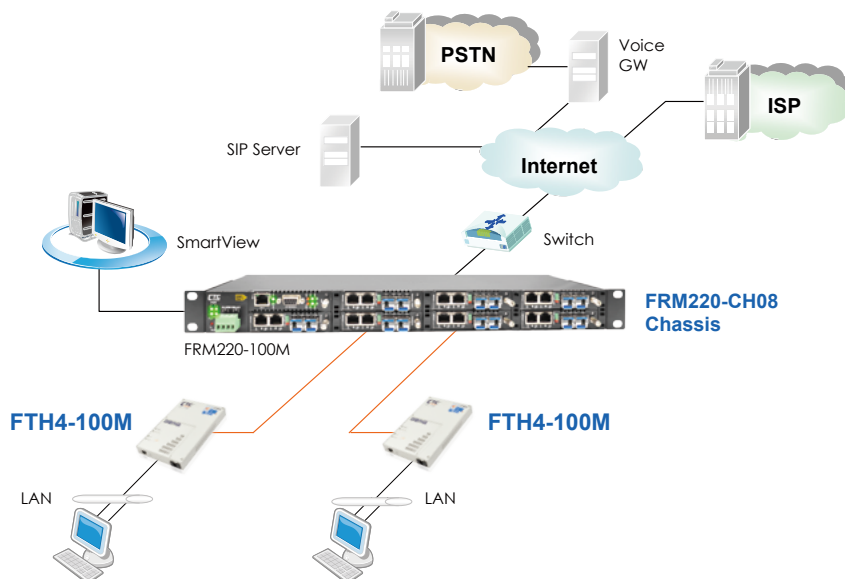
- 10/100Base-TX to 100Base-FX Converter
- Forwarding 9k bytes Jumbo Packet
- Built-in fiber cable tray
- Ingress / Egress Bandwidth control
- Support IEEE802.3ah-OAM/IP in-band management
- Firmware upgrade via Web
- Dying gasp (remote power failure detection)
- Supports Link Fault Pass-Through (LFPT) Function
- Supports Auto Laser Shutdown (ALS) Function
- Allow IP settings via Web management
- Supports On-Line F/W upgrade (local) by the Web manager
- Supports 16 Tag VLAN Group
- RMON counters
- Auto-Cross over for MDI/MDIX in TP port
- Auto-Negotiation or Manual mode in TP port
- Supports flow control Enable or Disable

### Specifications

<b>Optical Interface</b>	Connector	1x9 (SC, ST, FC) (Option)
	Data rate	100Mbps
	Duplex mode	Full duplex
	Fiber	MM 50/125μm, 62.5/125μm SM 9/125μm
	Distance	MM 2km, SM 15/30/50/80/120km WDM 20/40/60/80km
	Wavelength	MM 1310nm, SM 1310,1550nm WDM 1310Tx/1550Rx (type A) 1550Tx/1310Rx (type B)
<b>Standards</b>	IEEE802.3, IEEE802.3u, IEEE802.3ah, IEEE802.3x	
<b>Indications</b>	LED (Power, FX-Link, LAN Speed, LAN Link)	
<b>Power Consumption</b>	< 4W	

<b>Dimensions</b>	220 x 140 x 27mm (D x W x H)	
<b>Weight</b>	0.72kg	
<b>Electrical Interface</b>	Connector	RJ-45
	Data rate	10Mbps, 100Mbps
	Duplex mode	Half / Full duplex
	Cable	10Base-T Cat.3, 4, 5, UTP, 100Base-TX Cat.5, 5e or higher
<b>Power</b>	Adapter	Output Voltage: 12VDC
<b>Temperature</b>	0 ~ 60°C (Operating), -10 ~ 70°C (Storage)	
<b>Humidity</b>	10 ~ 90% non-condensing	
<b>Certification</b>	CE, FCC, RoHS compliant	
<b>MTBF</b>	65,000 hrs	

### Application



### QoS with Four Priority Queues

The QoS (Quality Of Service) function provides four priority queues to support different classifications of traffic. High priority packet streams experience less delay inside the FTH4-100M, which supports lower latency for certain delay-sensitive traffic. The FTH4-100M can classify the packet as one of the four priorities according to VIP port.

### Dying Gasp

The Dying Gasp features enables FTH4-100M media converter to send out a SNMP trap to alert the SNMP manager in the event of remote power failure.

### Remote Firmware Upgrade

The remote firmware upgrade feature enables the media converter to be updated remotely via firmware upgrade including the products that were already installed in the field. This feature eliminates the need for the users to ship the product back to the supplier.

### Bandwidth Control

The Bandwidth Control function allows users to set the bandwidth of FTH4-100M media converter for both ingress and egress rate and can be allocated a variety of rates up to full bandwidth capability of the devices (64Kbps ~ 100Mbps).

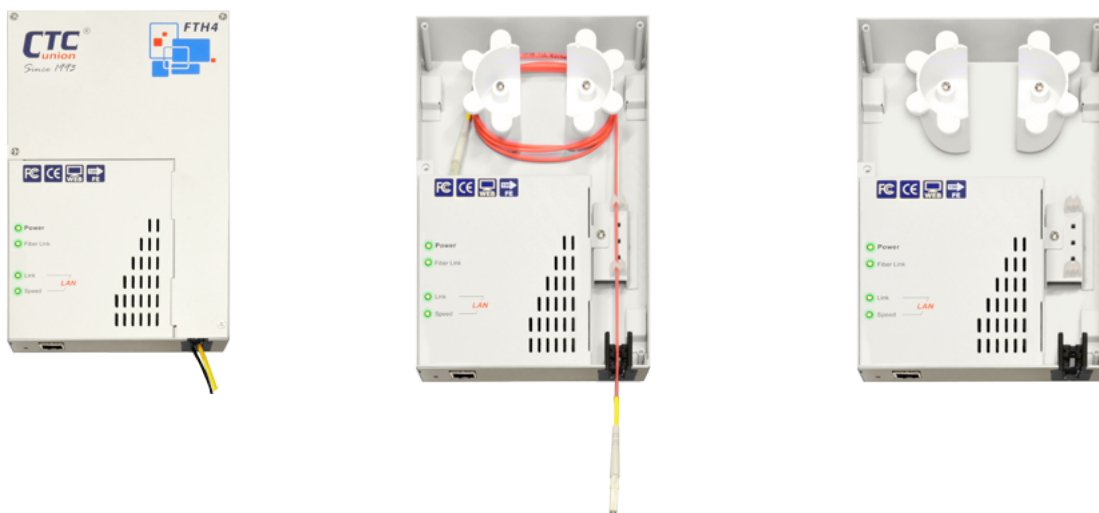
### Broadband Services

The FTH4-100M product philosophy allows the end user to follow and benefit fully from the fast developments in Fiber to the home-networking solutions. The CPE is the interface between the digital broadband network and the user peripheral equipment, such as routers, wireless access points, servers, and printers. With generations of computers and home networking equipment coming and going the FTH4-100M will be a constant and reliable factor for the delivery of broadband data services.

These services are not limited to today's broadband internet applications. In the next few years, end-users will also benefit from next generation health-care, security, communication and infotainment services. The FTH4-100M CPE platform fully supports today's services and is ready for the next wave of new broadband services. Flexibility is key, since the CPE functionality must be matched to the requirements of those new services.

### Quick Installation

The installation of the wall-mount unit of FTH4-100M CPE is swift and straightforward. Because of its size and ideal dimensions, the FTH4-100M CPE can be positioned easily at the user residence or home. The FTH4-100M design allows easy access for mounting and does not need the small elements, making the installation process predictable and hassle-free. The wall-mount unit, including integrated fiber tray not only makes fiber handling and termination easy and robust, but also eliminates the need for optical patch cords.



## Ordering Information

Model Name	Description
FTH4-100M	10/100Base-TX to 100Base-FX Web Smart OAM/IP managed media converter w/ cable tray