

FRM220A-1002ES

2x 10/100/1000Base-T and 2x 100/1000Base-X SFP GbE Managed Switch



2

Gigabit ethernet switch

The FRM220A-1002ES is a dual copper and dual fiber Gigabit Ethernet switch designed to make conversion between 10/100/1000Base-T and 100/1000Base-SX/LX with SFP connector. With SNMP and Web-based management in the FRM220 or FRM220A chassis the network administrator can monitor, configure and control the activity of each FRM220A-1002ES switch card locally via the chassis management. Based on a powerful L2 switch architecture, this converter supports bandwidth control, duplex and speed configuration, VLAN tagging, Q-in-Q, QoS, jumbo frames as well as auto laser shutdown, and link fault pass through.

Features

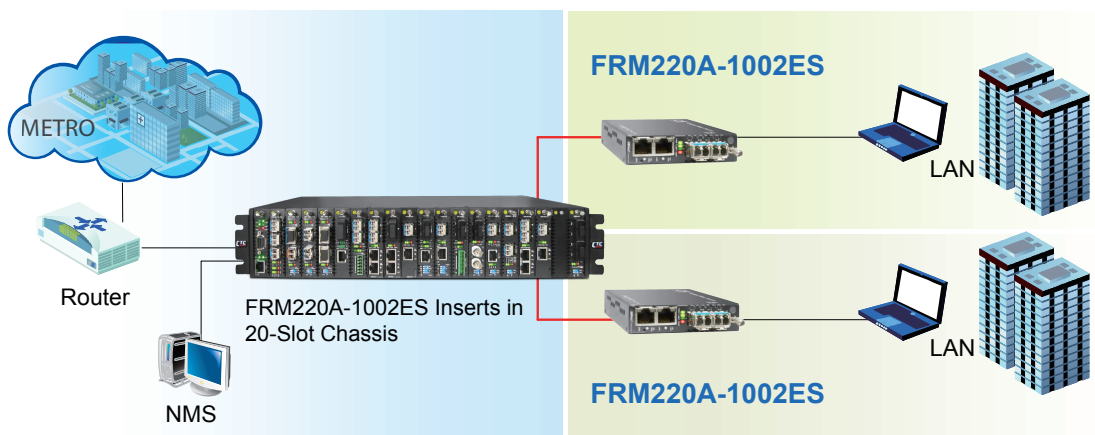
- 2-Port 10/100/1000Base-T and 2-Port 100/1000Base-X Switch
- Auto-Cross over for MDI/MDIX in TP port
- Auto-Negotiation or manual mode in TP port
- Supports flow control Enable or Disable
- Supports Jumbo Frame 10K Bytes
- Supports 16 Tag VLAN Group
- Supports Double VLAN tag (Q-in-Q)
- Supports Bandwidth control
- Supports Loop Back Test
- Supports Link Fault Pass-Through (LFPT) Function
- Supports Auto Laser Shutdown (ALS) Function
- Supports local management on FRM220A rack management.
- Console management on stand-alone.
- Supports D/D function for SFP fiber transceiver
- Provide Product information for management
- Supports the local management (Monitor or Configure status) by the SNMP manager.
- Supports FRM220A for Ethernet Aggregation

Specifications

Optical Interface	Connector	SFP LC
	Data rate	125Mbps, 1250Mbps
	Duplex mode	Full duplex
	Fiber	MM 50/125μm, 62.5/125μm SM 9/125μm
	Distance	MM 2km, SM 15/30/50/80/120km WDM 20/40/60/80km
Wavelength	MM	1310nm, SM 1310,1550nm
	WDM	1310Tx/1550Rx (type A) 1550Tx/1310Rx (type B)
Standards	IEEE 802.3, IEEE 802.3u, 802.3z, 802.3ab, 802.1Q, 802.3X, 802.1ad	
Indications	PWR, LNK1, LNK2, TEST, LAN Link, LAN SPEED	
Certification	FCC Part 15 Class A, CE Mark	

Electrical Interface	Connector	RJ45
	Data rate	10Mbps, 100Mbps, 1000Mbps
	Cable	10Base-T Cat.3, 4, 5, UTP 100Base-TX Cat.5, 5e or higher 1000Base-X Cat.5e or higher
Power	12VDC	
Dimensions	155 x 88 x 23mm (DxWxH)	
Weight	130g	
Temperature	0~50°C (Operating), -10~70°C (Storage)	
Humidity	0 ~ 95% non-condensing	

Application



Ordering Information

Model Name	Description
FRM220A-1002ES	2-Port 10/100/1000Base-T and 2-Port 100/1000Base-SX/LX SFP GE Manage Switch

Note: This card must use CH01M, with serial console, to configure standalone settings.