

**NEW**

# iSAP1000

## STM1/E1 Multiplexer



12

STM1/E1 access multiplexer

iSAP1000 is 1U 19" rack type STM-1/E1 terminal multiplexer which delivers traditional PDH services over SDH networks. iSAP1000 provides connectivity for up to 16E1. The product complies with SDH standards and interfaces with existing SDH backbones through a single or 1+1 protection STM-1 interface. iSAP1000 supports a variety of management access over console, Telnet and SNMP. iSAP1000 provides two Gigabit Combo ports (2-port 10/100/1000Base-T and 2-port 1000Base-X SFP slot) with 16x E1 or 2x STM-1 fiber interfaces. The two GE combo ports support Link aggregation, port based VLAN and 802.1Q VLAN function.

### Features

- Provides 2-port STM-1 fiber with 1+1 protection.
- Supports Internal clock and recovery clock modes
- Supports Single E1 fractional and unframed E1 service; Multiple E1, fractional E1
- Supports PCM31, FAS+CRC4, CRC self-test
- Supports HDLC/GFP bridge operation, 16x VCG with total 16 remote device, 16E1 Per VCG, MAX data rate 32Mbps Per VCG
- Supports 16E1 balanced RJ45 or unbalanced BNC connectors
- Maximum 220ms delay variance between E1 links
- Supports 2x GbE Combo ports
- Supports IEEE 802.1Q VLAN and QinQ, Link aggregation
- Fiber port support ALS(Auto Laser Shutdown) function
- Built-in BERT for performing local and remote loopback
- Supports Console, GUI, telnet and SNMP management
- Supports local and remote FTP/TFTP f/w upgrade
- Complies with ITU-T G.8040 standard

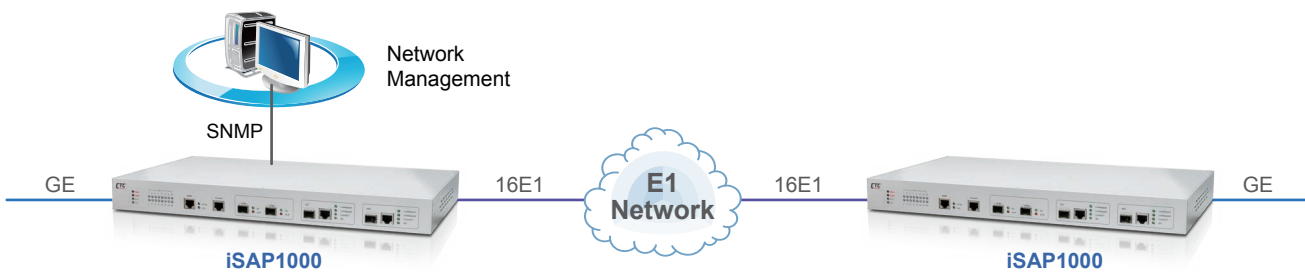
### Specifications

<b>Ethernet Interface</b>	Supports 2x GE combo ports Auto Negotiation, AUTO-MIDX, 10M/100M/1000M, Full/Half Duplex Connector : RJ45
<b>Optical Interface</b>	Supports 802.3x flow control 1000FX, SFP Connector : LC
<b>E1 Interface</b>	Supports 802.3x flow control Up to 16x E1(ITU-T G.703) Line Impedance : 75ΩBNC or 120ΩRJ45 Bit rate : 2048kbps±50ppm Line code : HDB3
<b>STM-1 Interface</b>	Supports 2x STM-1 optical fiber port with SFP slot Supports 1+1 optical fiber protection

<b>Management port</b>	One console port with RJ45 connector One SNMP Ethernet port with RJ45 connector
<b>LED Indicators</b>	SYS, PWR, PWR1, PWR2, GE(LNK/ACT, SD), E1(LOS, SYNC)
<b>Standards</b>	IEEE802.3 Ethernet, IEEE802.3u, IEEE802.3Z, IEEE802.3X, IEEE802.1Q, IEEE802.1ad, SNMPv1/v2c/v3, ITU-T G.703, ITU-T G.704, ITU-T G.823
<b>Dimensions</b>	310 x 440 x 44mm (D x W x H)
<b>Power</b>	AC: 90-265V, DC: -48V, Supports AC+AC, DC+DC, AC+DC
<b>Power Consumption</b>	<24W
<b>Temperature</b>	Operating: -5 ~ 50°C Humidity : ≤90% non-condensing

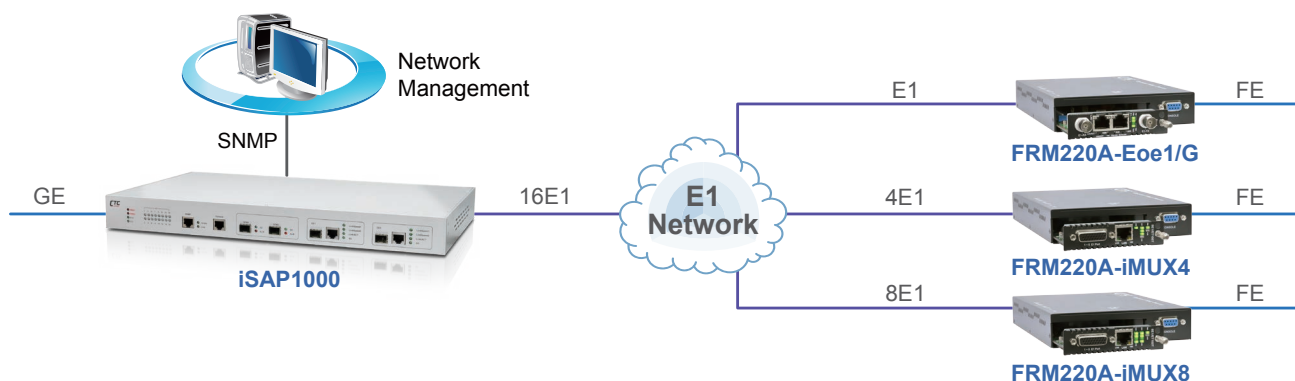
### Application

#### P to P, GE over 16E1 application

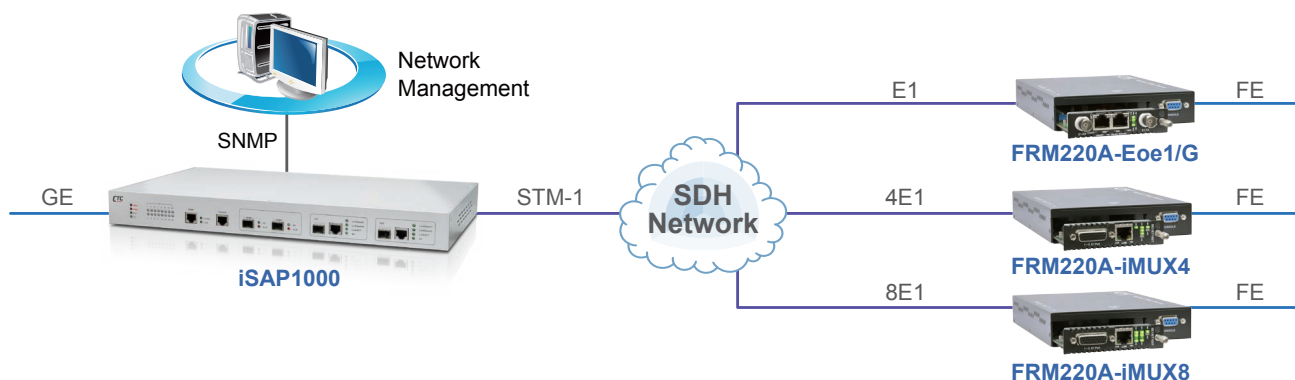


## Application

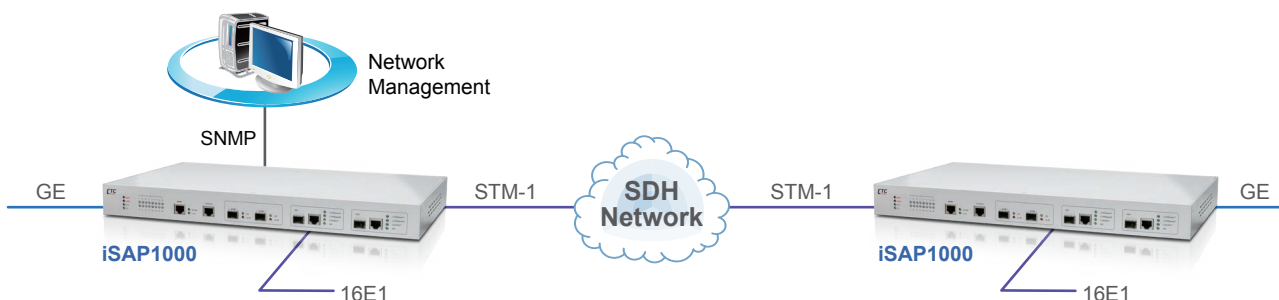
### Point to Multi-points 16E1 aggregation



### Point to multi-points 16E1 aggregation over STM-1



### GE + 16E1 over STM-1 Application



## Ordering Information

Model Name	Description
iSAP1000-16E1B-AD	2x GbE Combo over 16E1 BNC, P to P, 1U 19" Rack, AC+DC power
iSAP1000-16E1R-AD	2x GbE Combo over 16E1 RJ45, P to P, 1U 19" Rack, AC+DC power
iSAP1000-GE/16E1B-AD	2x GbE Combo over 16E1 BNC, P to M, 1U 19" Rack, AC+DC power
iSAP1000-GE/16E1R-AD	2x GbE Combo over 16E1 RJ45, P to M, 1U 19" Rack, AC+DC power
iSAP1000-GE/STM1-AD	2x GbE Combo over STM1, P to P, 1U 19" Rack, AC+DC power
iSAP1000-STM1B-AD	2x GbE Combo + 16E1 BNC over STM1, P to P, 1U 19" Rack, AC+DC power
iSAP1000-STM1R-AD	2x GbE Combo + 16E1 RJ45 over STM1, P to P, 1U 19" Rack, AC+DC power

Correcor      Power Type  
**iSAP 1000** – □□□□□ – □□  
 Example: iSAP 1000 – 16E1B – AD